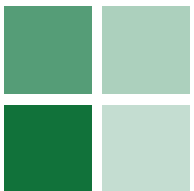


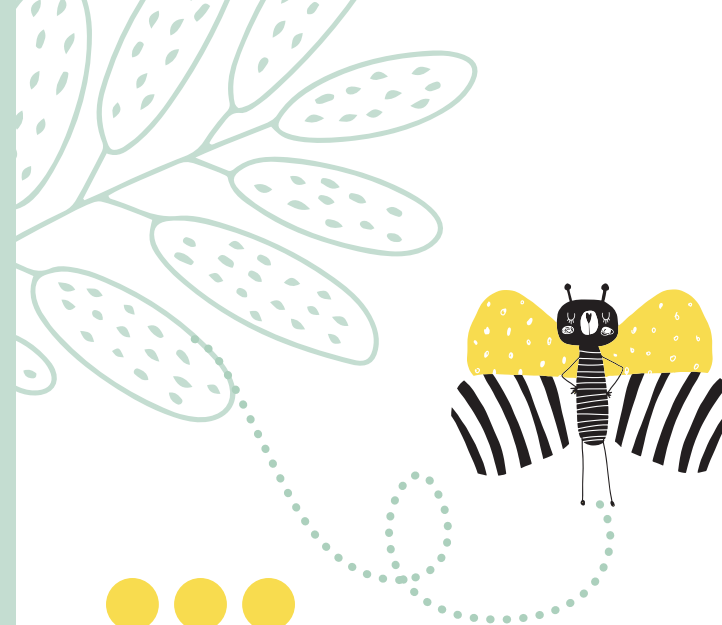


**Your Child's
Education
Begins Here**



**HASTINGS
SCHOOL**

care/curiosity/success/global



Why is Hastings the best place to begin your child's education?

Hastings is a prestigious British International School with more than 50 years of experience, made up of 6 different campuses in Madrid centre.

- We are passionate about teaching and learning
- We provide an environment in which students become globally minded: culturally intelligent and socially responsible
- We help our students to develop the qualities and attributes they will need to be successful at school, university and in life.

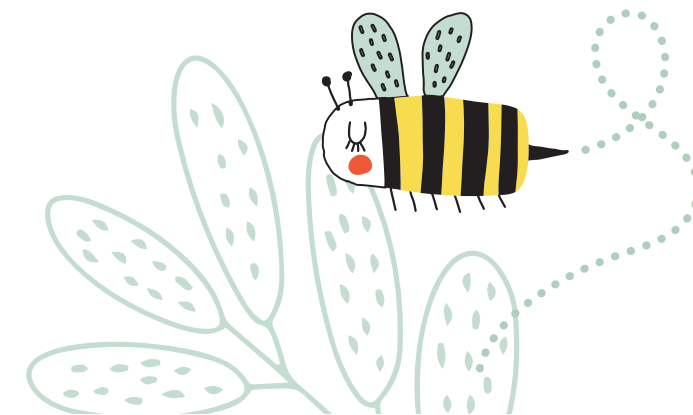
We believe that to achieve the best results, you need the best start, which is why we encourage you to send your child to Early Years at Hastings School.



What does Early Years at Hastings involve?

At Hastings, we welcome children between the ages two and five years old (Pre-Nursery, Nursery and Reception).

We follow the Early Years Foundation Stage curriculum which is a broad and balanced curriculum for children from birth to the age of five. Our team of specialised professionals has considerable experience in this initial stage.



●●● Areas of Learning in the EYFS Curriculum



Communication and Language

At Hastings School, the children have full immersion in English from day 1. This is one of the reasons why Pre-Nursery is such an important year. Our youngest pupils start to develop an understanding of English and begin to use simple words and phrases.

In all of our Early Years classes, the teachers plan many activities designed to help the children develop skills to express themselves and have opportunities to speak but also listen carefully in a range of different ways.



Personal, Social and Emotional Development

During their time in Early Years, the children develop a positive sense of self and good relationships with others.

Our staff view each child as an individual and form strong bonds with their pupils.

The children learn to share, take turns and to work collaboratively with their peers. They also begin to share their feelings and develop empathy for others.

Many of these important skills are developed through modelling, prompting and support from the teaching staff.



How We Encourage Physical Development

This area of learning focuses on helping the children to develop their gross and fine motor skills further.

● Gross motor

The children participate in two Physical Education sessions per week with a qualified PE specialist. They access age-appropriate resources chosen to help them enjoy being active and develop their control, coordination and movement.

● Fine motor

Before beginning to write, our pupils develop their strength and control by participating in activities designed to develop their fine motor skills further such as threading beads, using tweezers/ pegs/pipettes and using their fingers to draw or write in sand or shaving foam.



Learning Environments and Outdoor Learning

Teaching staff ensure that they are creating opportunities and designing learning environments that encourage the children to play and explore, actively learn and think critically.

Within an Early Years classroom, the children have the opportunity to choose the resources and the activities that they would like to participate in. This is called child initiated learning.

Each classroom has an inviting and comfortable Reading Area filled with books that reflect the children's interests and the current topic they are learning about.

There will also be an exciting and engaging Role Play Area created to develop the children's imagination, confidence and communication and language skills.

Outdoor Learning is an extremely important part of the Early Years Foundation Stage Curriculum. We ensure that the pupils have the opportunity to access appropriate activities both inside and outside of the classroom.





Why starting a British International Education early is the Right Decision:

The benefits of starting a second language early are well-known:

- Uses the same part of the brain as native language
- Positive correlation to cognitive development
- Boosts problem-solving, critical-thinking, and listening skills
- Improves memory, concentration, and the ability to multitask
- Enhanced creativity and mental flexibility
- Bilingual children have improved reading, writing, and maths skills, and they generally score higher on standardised tests

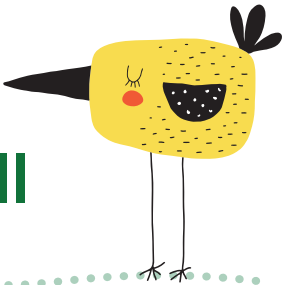
In evidence, we can show that the earlier a child starts at Hastings Early Years, the better results in standardised tests at end of Y1.

The average score in the UK is 100.

Pupils who started in ...	Average score in Progress Test	
	in English in Y1	in Maths in Y1
Pre-Nursery	108.6	114.6
Nursery	105.8	112.8
Reception/Year 1	102.0	107.6



Support for all at Hastings



As you can see below, the number of teachers we have per student, as well as the level of their experience and qualifications, allow us to ensure that everyone is looked after and attended to at our school.

Our Learning Support Team works with the teachers closely to recommend pupils for extra help and often they only need to receive a short intervention.

By having an Early Intervention Specialist, we are able to identify children who are having difficulties with for example, Speech and Language and Gross/Fine motor skills, and refer them early.



How Many Adults Do We Have for Each Pupil?

The table below shows the maximum adult pupil ratio that Hastings School Early Years allows in their classes, however the reality is that most classes have lower ratios.

Pre-Nursery	1 adult to 5 children
Nursery	1 adult to 8 children
Reception	1 adult to 12 children



The Experience and Qualifications of Our Teachers:

Our staff are highly qualified and have great relationships with the families. There is a very low staff turnover. All of our teachers have UK teaching qualifications and all of our teaching assistants have at least a degree level qualification and 86% have a post-graduate teaching qualification.

	Average year	
	at Hastings	in Profession
Teachers	5	8.5
Teaching assistants	4	8
Leaders	5.5	21



How to Reach Us

Admissions

admissions@hastingschool.com

(+34) 608 491 084

Early Years:

Paseo de la Habana, 204

(+34) 91 359 06 21 habana.secretary@hastingschool.com

Early Years:

Ronda De Sobradriel, 31-33

(+34) 91 831 61 98 sobradriel.secretary@hastingschool.com

Learn More About Hastings' Everyday Life:



[@hastingschool](https://www.instagram.com/hastingschool)



[@hastings_school](https://twitter.com/hastings_school)



[HastingsSchool](https://www.facebook.com/HastingsSchool)



[Hastings-School-Madrid](https://www.linkedin.com/company/Hastings-School-Madrid)

COGNITA

An inspiring world of education